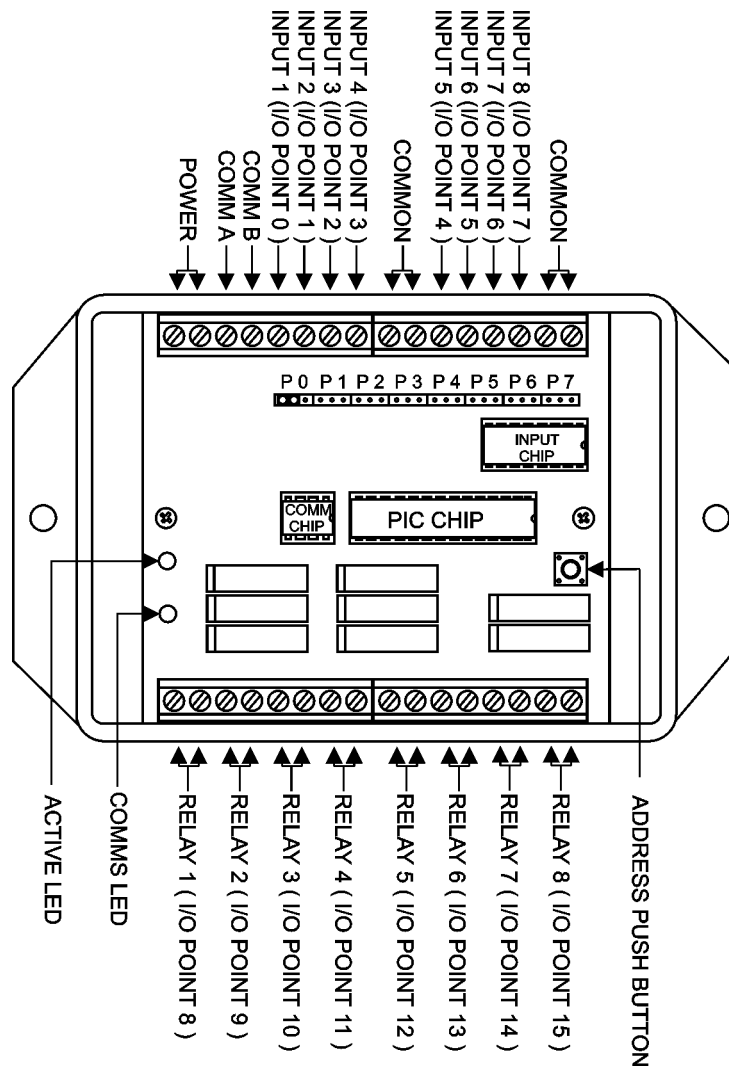


SECU-16™



Introduction

The SECU-16™ module allows 8 inputs and 8 low-current relay outputs to be added to an ADICON™ control system. The inputs may be supervised (switch closure), analog, or 4-20mA.

Specifications

Power:	Input Voltage	9 - 12V DC or AC
	Input Current Max	200mA
Inputs:	8 2-wire inputs, Analog (0 – 5VDC) or Supervised	
Outputs:	8 Relay outputs 24VDC, 1Amp	
Dimensions:	5.5"W x 3.25"L x 1.38"D	
Operating Temperature:	0°C to 70°C	

Setup

Remove the SECU-16™ top cover.

Connect the power supply to the two screw terminals labeled POWER.

Connect the COM A and COM B terminals to the ADICON™ bus (see Figure 1).

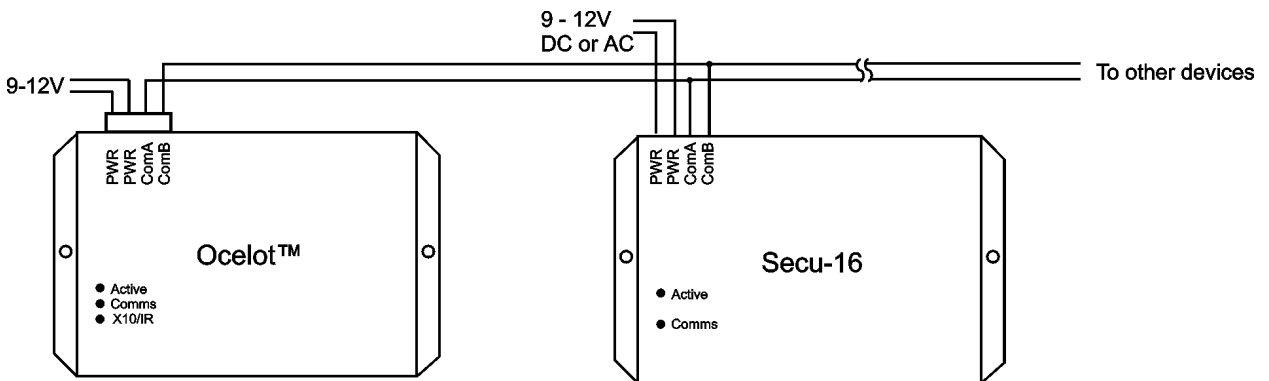


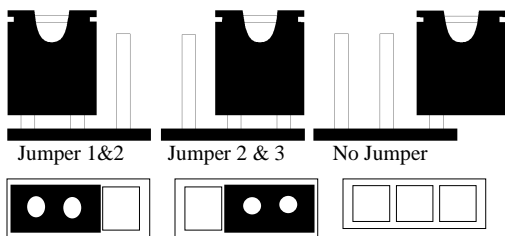
Figure 1. Typical Wiring Diagram

Three types of inputs may be used on the SECU-16™, supervised, analog, and 4-20mA. A supervised input is a passive, non-current supplying input such as a relay or switch. An analog input provides a varying voltage such as a light sensor. Input types are controlled by the jumpers as shown Table 1.

Jumpers P2 – P9 control the type of inputs used. P2 controls input 1, P3 controls input 2, etc.

Input Type	P2 – P9
Supervised	2-3
4-20mA	1-2
Analog	Off

Table 1. Jumper Settings



To use an input as a supervised input a 1K Ohm resistor (supplied) must be placed across the input as shown in Figure 2.

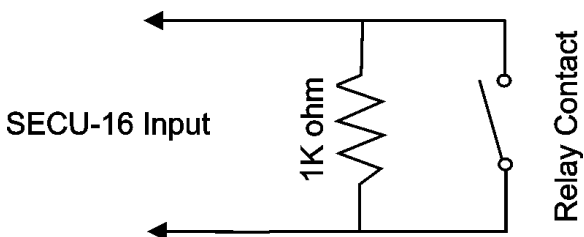


Figure 2

Operation

ADICON™ LED Codes

ACTIVE led – Slow Blink, Module has a valid address

ACTIVE led – Rapid Blink, Auto Address mode active

COMMS led – Blinks rapidly during ADICON™ communications

Parameter	Function
1	Module Address
2	Low Analog Threshold
3	High Analog Threshold
10	Analog Value Input 1
11	Analog Value Input 2
12	Analog Value Input 3
13	Analog Value Input 4
14	Analog Value Input 5
15	Analog Value Input 6
16	Analog Value Input 7
17	Analog Value Input 8

Table 2. SECU-16™ Parameters

Inputs and outputs are represented by I/O points within a module. The SECU-16™ has 16 I/O points, input 1 is represented by I/O point #0, input 2 is I/O Point #1, etc. Relay 1 is represented by I/O point #8, relay 2 is I/O point # 9 and so forth.

Supervised Inputs

A supervised input is a switch or relay type input. The SECU-16™ will report OFF when the switch is open and ON when the switch is closed. See the example below on using a supervised input.

Line#	Program Text	Comments
1	If Module# 2/ Point# 0 Turns ON	If the front door opens
2	Then Module# 2/ Point# 8 Turns ON	Sound alarm connected to 1st relay
3	If Module# 2/ Point# 0 Is OFF	If front door closes
4	Then Module# 2/ Point# 8 Turns OFF	Turn off alarm connected to 1st relay

Analog Inputs

Analog inputs are inputs with a voltage that can vary from 0 – 5VDC such as a light sensor. The SECU-16™ will read an analog input and compare the value to the low and high threshold parameters. If the analog value is between the low and high thresholds the SECU-16™ will report that the input is OFF. If the analog input value is lower than the low threshold or higher than the high threshold the SECU-16™ will report that the input is ON.

Setting Threshold Values

Threshold and analog values are determined using the following formula:

To determine the analog reading of an known input voltage:

$$\text{Analog Reading} = \text{Sensor Voltage} \times (256 / 5) = \text{Sensor Voltage} \times 51.2$$

Example: If the analog voltage from a light sensor is 2 volts the analog reading would be

$$2 \times (256/5) = 102$$

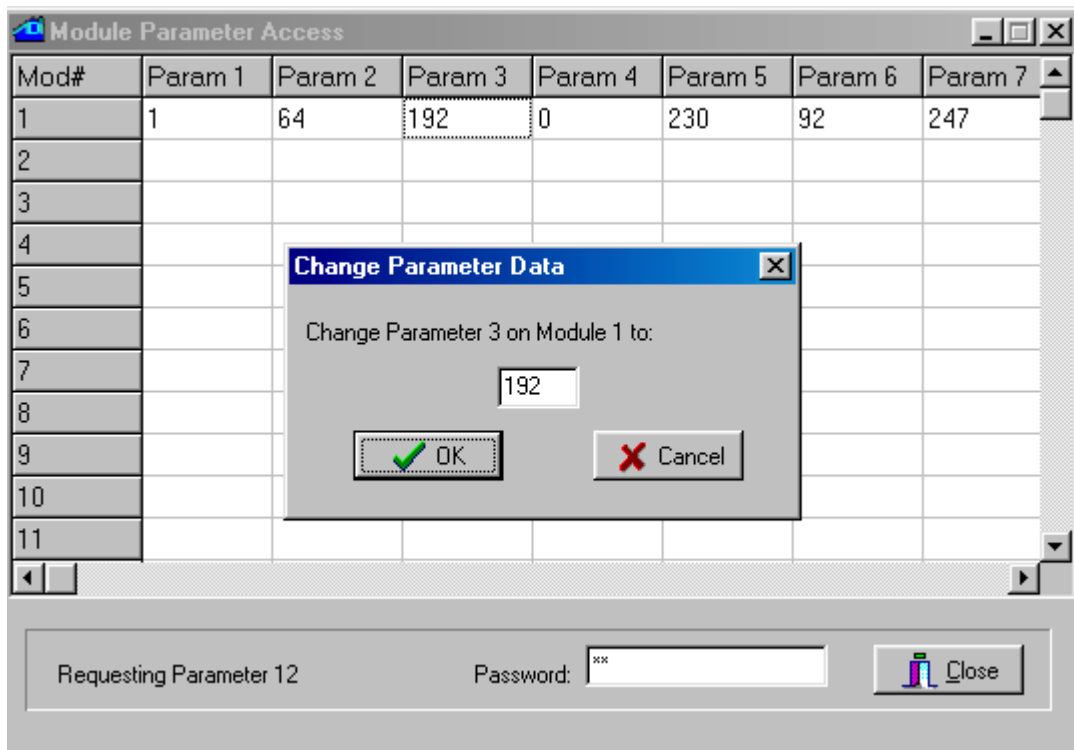
To determine the voltage of an analog reading use:

$$\text{Voltage} = \text{Analog Reading} \times (5 / 256) = \text{Analog Reading} \times 0.01953$$

Example: If the high threshold is 192 the voltage would be

$$192 \times 5 / 256 = 3.75\text{V}$$

The threshold values are stored in parameters 2 and 3 (see Table 2). C-Max™ is used to change a parameter value. Below is a sample screen of the Module parameter utility



The threshold values can also be used to perform reverse logic. Lets say for example you want an input to be OFF when closed and ON when open, such as a door sensor in a security system. This can be done by setting the low threshold to 0 and the high threshold to 128. If you wanted to have the input report OFF when open and ON when closed, set the low threshold to 128 and the high threshold to 255. This can be done with analog or supervised inputs.

Example of Analog Input: Using a light sensor to turn outside lights on and off

First determine the threshold voltages of when you want the lights to turn on and off. For our example we will use 1.5V(77) to turn the lights on and 3.5V(179) to turn the lights off. The code example below shows how to turn the lights off after sunrise only if there is enough light and turn the lights off after dusk when dark enough. In this example, the more light on the sensor the smaller the analog reading.

Line#	Program Text	Comments
1	If Time of Day is = Sunrise + 0 minute(s)	If it's sunrise
2	And Module# 1/ Param# 10 is < 77	And light Level is less than 77
3	Then Module# 1/ Point# 8 Turns OFF	Turn the light off
4	If Time of Day is = Sunset + 0 minute(s)	If it's sunset
5	And Module# 1/ Param# 10 is > 179	And light level is greater than 179
6	Then Module# 1/ Point# 8 Turns ON	Turn light on